



NetLux AI for utilities

The only field-ready AI computer vision platform for utility networks, from construction to operations. With NetLux AI, automate quality inspection and document your grid reliably.



+20M
field jobs analyzed per year

+30,000
daily field users

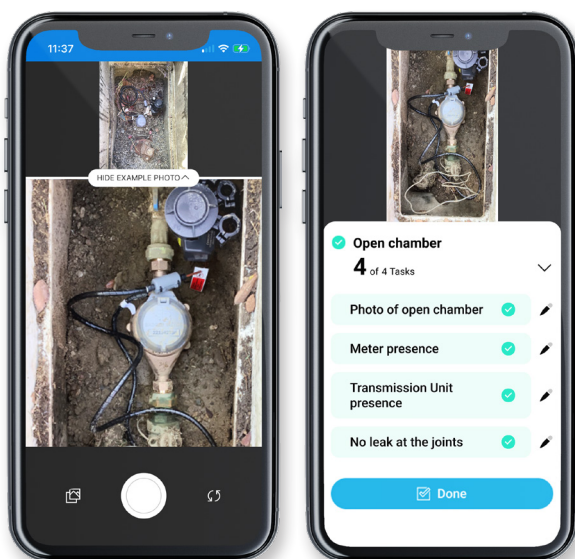
Solutions30

Jacobs

circet
Ireland & UK

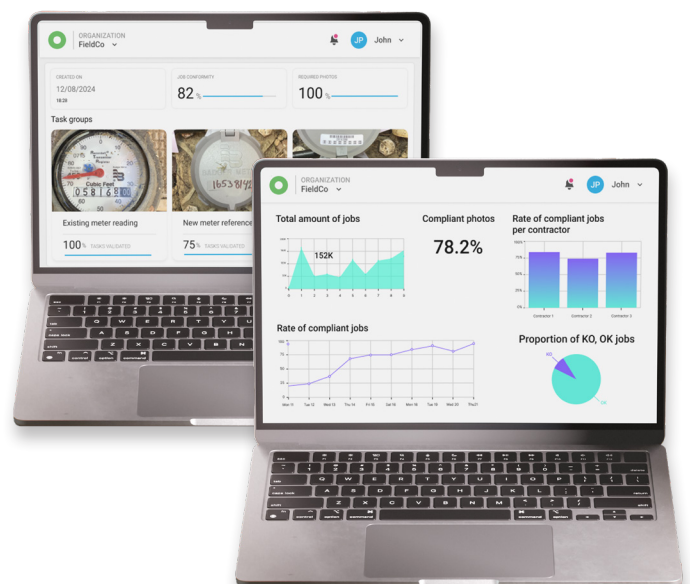
In the field

Live feedback to field worker on photo conformity and work compliance



In the office

Dedicated back-office dashboards providing access to photos, QC results and operational KPIs



Benefits



First-Time-Right field jobs

Utility grids photos are analyzed in real-time to ensure your workers perform their job right the first time.



Enriched as-builts

Get the full stack of data on network assets and their environment to create accurate as-built documentation



Accurate closeouts

Photo documentation conformity is verified in real-time to provide operator and contractor organizations reliable proof about the work done in the field



Process automation

Gain efficiency by automating processes such as contractor payment, asset inventory and asset condition monitoring.

Why NetLux AI?



Easy integration

Faster implementation thanks to existing integration with IQGeo **Network Manager Electric & Gas**, Praxedo, Zinier, Oracle, SiteTracker, Render & more



Unbeaten AI computer vision expertise

Proven expertise in utilities with off-the-shelf AI models for a faster time-to-value

IQGeo Utility Suite: AI-powered Geospatial Work Execution

From rapid design to asset management to outage restoration, our game-changing software integrated with your GIS and other network data to revolutionize your system of record.



- Transform to network model management
- Apply a modern utility experience
- Streamlined field reporting

- Automated quality inspection
- Accelerate digital transformation
- Improve data accuracy

Our flexible and powerful network model management solution enables utilities to digitalize the entire lifecycle of the grid.